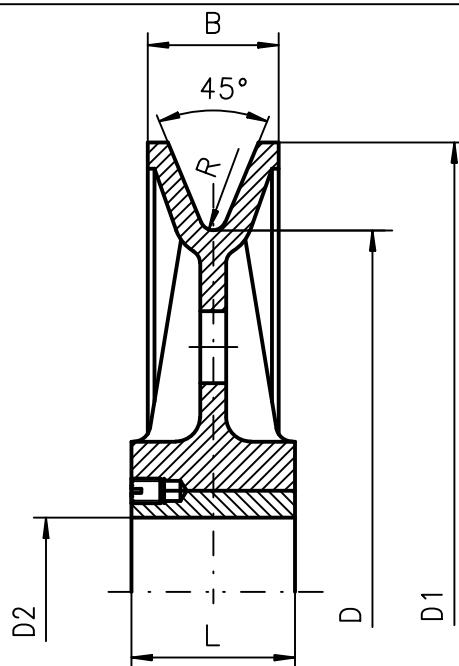


KRAŻEK LINOWY NA ŁOŻYSKACH ŚLIZGOWYCH typ CLs



Symbol	Numer rysunku	D [mm]	Wyko- nanie		Zakres średnic lin	Wymiary					Masa						
			żeliw.	staliw.		D1	D2 (H9)	L	R	B - dla		żeliw.	staliw.				
										żeliw.	staliw.			[mm]		[kg]	
1	061CLs	100	A	B	do 5	120	20	35	2,5	18	18			1.1	1.2		
			C	D										25	1.0	1.1	
			E	F										20	0.9	1.0	
			G	H										25	1.0	1.1	
			I	J										30			
2	062CLs	125	A	B	5÷6	150	25	25	3	22	22			0.9	1.0		
			C	D										30	0.8	0.9	
			E	F										25	0.9	1.0	
			G	H										30			
3	063CLs		A	B			35	40					1.6	1.8			
4	064CLs	160	A	B	6÷8	190	20	30	4	28	28			2.3	2.5		
			C	D										25	50	2.6	2.8
			E	F										30	30	2.3	2.5
5	065CLs		A	B			40	30					2.8	3.0			
			C	D			45										
6	066CLs	200	A	B	7÷10	235	30	35	5	32	32			3.3	3.6		
			C	D										55	3.8	4.1	
			E	F										35	35	3.3	3.6
7	067CLs		A	B			50	35					3.9	4.2			
			C	D			60	40									
			-	E			35		-								
8	068CLs	250	A	B	9÷12	290	30	45	6	38	36			5.5	6.0		
			C	D										60	6.0	6.5	
			E	F										40	40	5.0	5.5

Symbol	Nr rysunku	D	Wyko-		Zakres średnic lin	Wymiary						Masa		
			żeliw. [mm]	staliw. [mm]		D1	D2 (H9)	L	R	B - dla		żeliw. [kg]	staliw. [kg]	
		żeliw.			staliw.									
		[mm]						[kg]						
9	069CLs	250	A	B	9÷12	290	50	50	6	38	36	7.6	8.0	
			C	D			60	60				7.9	8.5	
			-	E			70	40				-	7.0	
10	070CLs	280	A	B	10÷14	325	35	50	7	41	39	9.5	10.2	
			C	D			40					9.4	10.1	
			E	F			50					9.1	10.0	
11	071CLs	280	A	B	10÷14	325	60	70	7	41	39	13.1	14.2	
			C	D			70					50	15.9	17.1
			E	F			90					45	13.0	14.0
-	G	-	-	-	12.7									
12	072CLs	315	A	B	12÷16	365	50	80	8	45	43	16.5	17.5	
			C	D			55	55				13.5	14.5	
			E	F			60	60				14.0	15.0	
			G	H			60	80				16.0	17.0	
			I	J			65	50				13.0	14.0	
13	073CLs	315	A	B	12÷16	365	80	60	8	45	43	16.0	16.8	
			C	D			80	70				17.2	18.5	
			-	E			100	50				-	10.7	
14	074CLs	355	A	B	13÷18	415	50	90	9	55	50	19.5	20.5	
			C	D			60	60				15.0	16.0	
			E	F			70	70				17.0	18.0	
			G	H			70	80				18.0	19.0	
15	075CLs	355	A	B	13÷18	415	80	65	9	55	50	24.4	25.8	
			C	D			90	60				23.2	24.3	
			E	F			90	70				24.7	26.2	
			G	H			100	80				26.2	27.8	
			-	J			110	60				-	26.0	
-	K	130	60	-	24.3									
16	076CLs	400	A	B	14÷20	465	60	105	10	60	55	29.5	31.0	
			C	D			65	80				26.5	27.5	
			E	F			70	70				25.0	26.0	
17	077CLs	400	A	B	14÷20	465	90	70	10	60	55	30.7	32.7	
			C	D			100	80				32.0	34.0	
			-	E			140	65				-	27.6	
18	078CLs	450	A	B	16÷22	520	70	70	11	65	60	29.5	31.8	
			C	D			80	75				30.9	33.3	
			E	F			80	90				29.2	31.4	
			G	H			80	80				30.0	32.4	
			I	J			90	90				30.9	33.3	
19	079CLs	450	A	B	16÷22	520	90	100	11	65	60	40.0	43.1	
			C	D			100	110				44.0	47.5	
			E	F			110	80				37.0	40.0	
			-	G			150	70				-	34.0	
			-	G			-	-				-	-	

