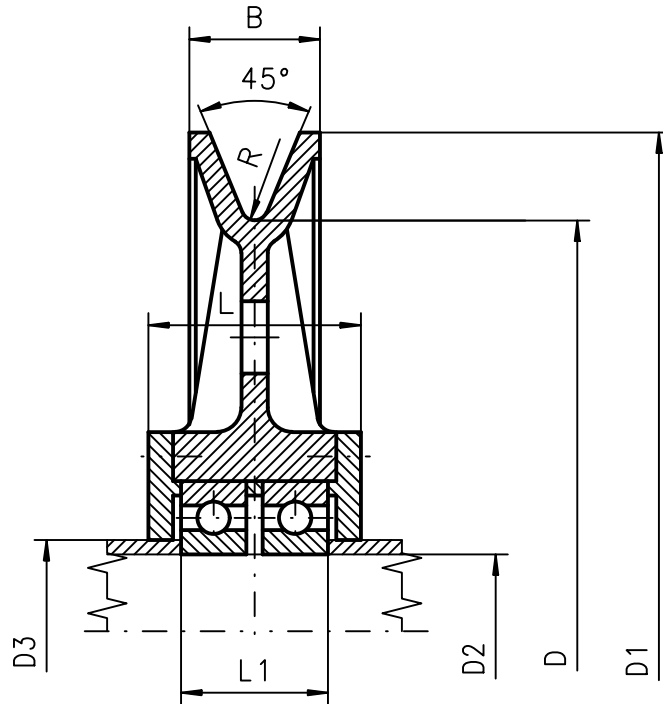


KRAŻEK LINOWY NA ŁOŻYSKACH TOCZNYCH typ CLr



Symbol	Numer rysunku	D	Wyko- nanie	Zakres średnic lin	Wymiary								Masa	
					D1	D2	D3	L	L1	R	B - dla		żeliw.	staliw.
											żeliw.	staliw.		
		[mm]	-	[mm]								[kg]		
1	075CLr	280	A;B	10÷14	325	60	68	70	42	7	41	39	13.7	14.6
2	076CLr	315	A;B	12÷16	365	60	70	80	50	8	45	43	17.3	18.2
3	077CLr		A;B			80	95	75	48				18.3	19.3
4	078CLr	355	A;B	10÷14	415	70	85	80	54	7	55	50	24.5	25.5
5	079CLr		A;B	13÷18		90	105	80	53				9	23.5
6	080CLr	400	A;B	14÷20	465	100	115	80	53	10	60	55	29.0	30.3
7	081CLr	450	A;B	16÷22	520	80	95	90	60	11	65	60	49.5	52.0
			C;D			100	115		63					
8	082CLr		A;B			90	105	100	70				54.0	57.0
			C;D			110	125	90	60					
9	083CLr	500	A;B	18÷24	575	120	135	95	60	12	70	65	71.5	75.0
			C;D			100	115	115	78					
			E;F			120	135	100	65					
10	084CLr		A;B			130	145	105	71				90.4	95.5
11	085CLr	560	A;B	16÷22	630	130	145	110	76	11	65	60	90.0	94.5
12	086CLr		A;B	20÷28	640	140	155	115	80	14	75	70	87.0	93.0
13	087CLr		A;B			120	135	125	90				88.8	94.3
			C;D			150	165	110	77					
14	088CLr	630	A;B	24÷32	720	140	155	110	75	16	80	75	98.0	107.0
15	089CLr		A;B	18÷24	705	150	165	115	82	12	70	65	108.5	114.5
			C;D					110	77					
16	090CLr		A;B	24÷32	720	170	190	125	90	16	80	75	122.0	128.0